

BIG LANDS BRAZIL

**These lands ideal for Cattle,
Teak, Eucalyptus, and Palm Oil**

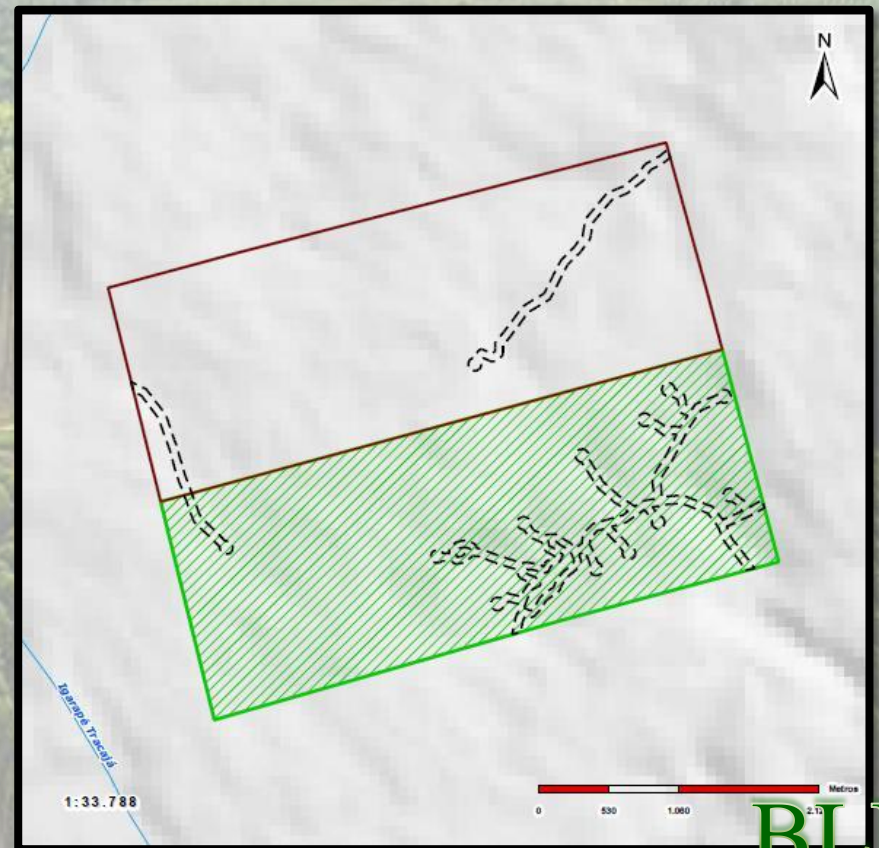
www.biglandsbrazil.com



FARM 1

Total Area: 1,475.26 hectares

Open Area: 730.07 hectares

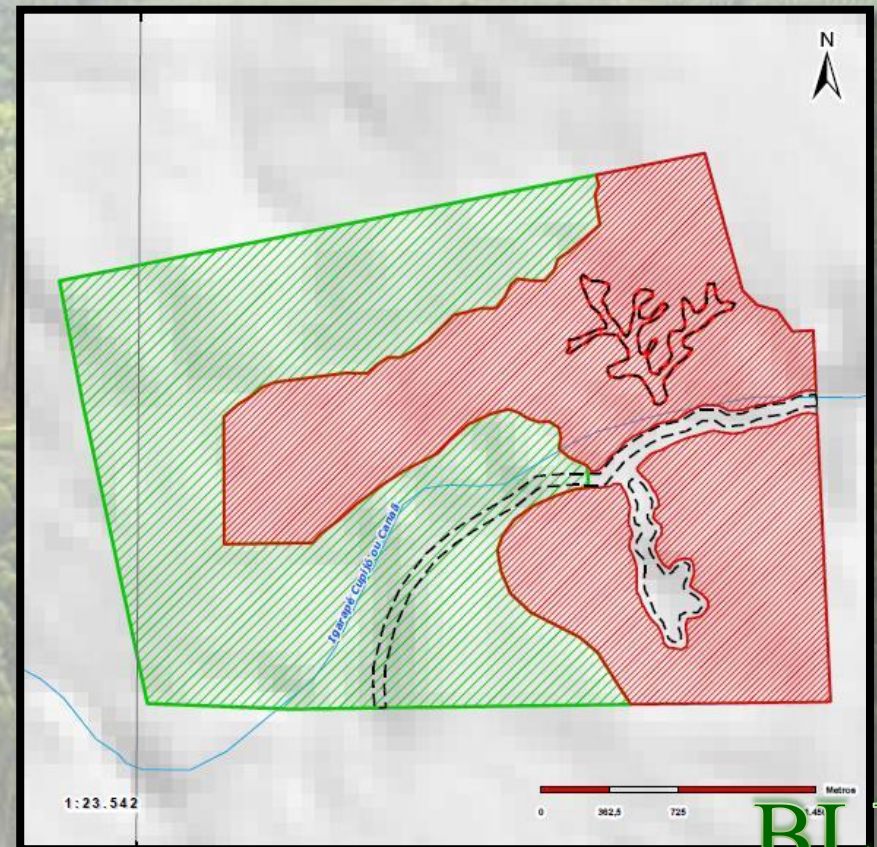




FARM 2

Total Area: 964.62 hectares

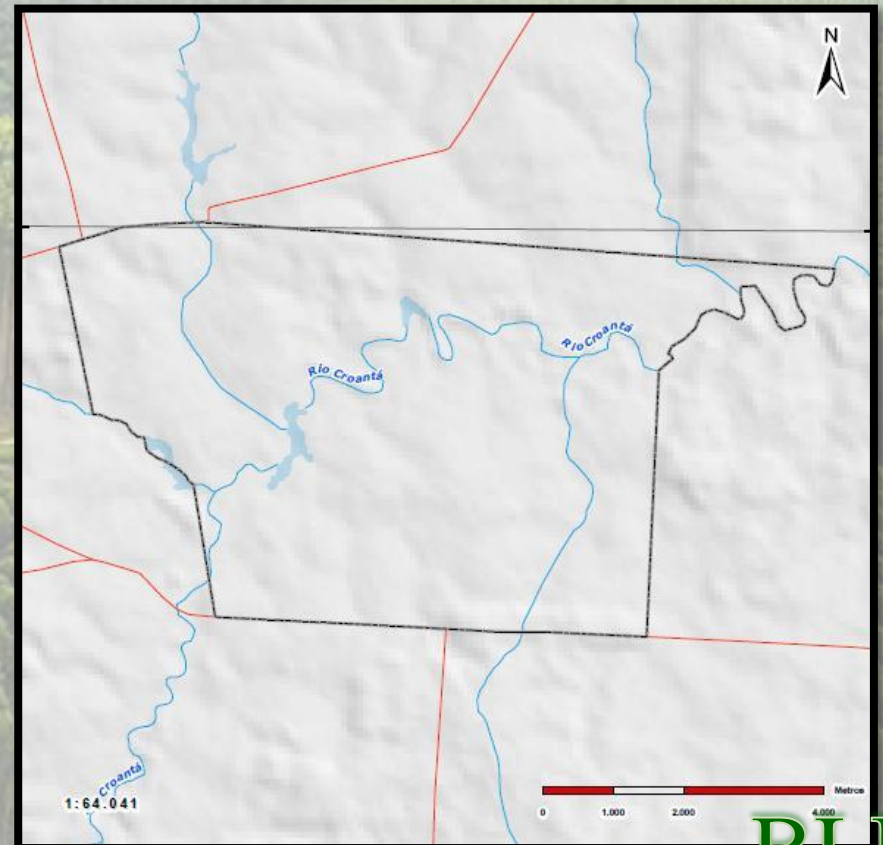
Open Area: 441.98 hectares



FARM 3

Total Area: 4,310.17 hectares

Open Area: Total Open

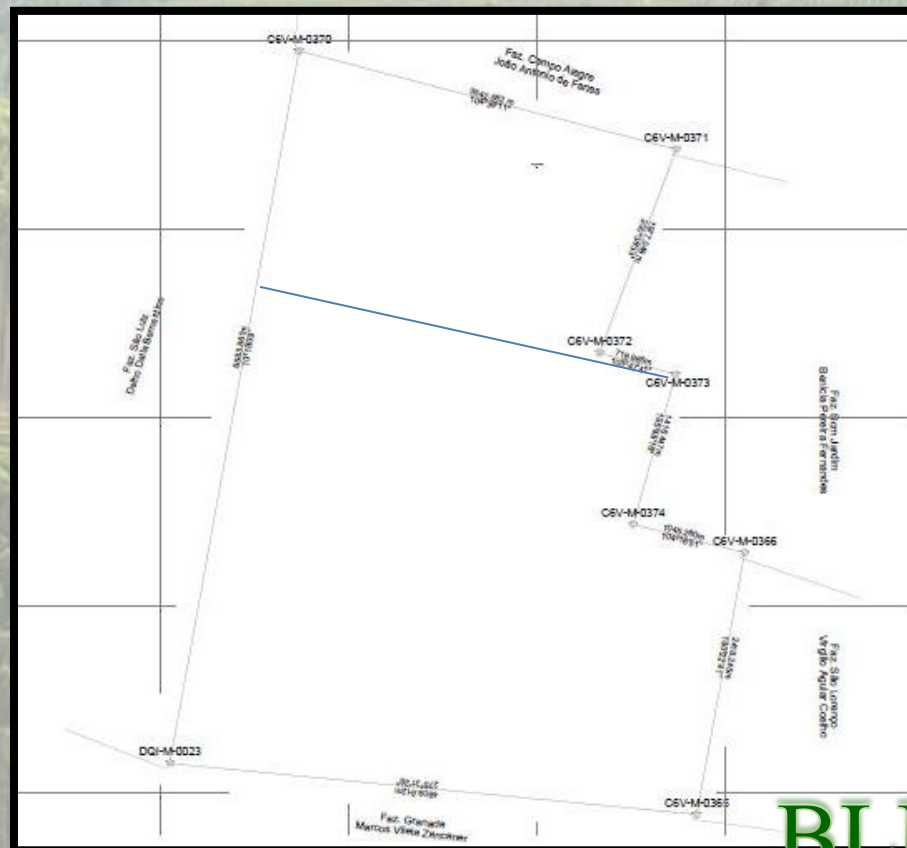




FARM 4

Total Area: 2,549.95 hectares

Open Area: 800.98 hectares

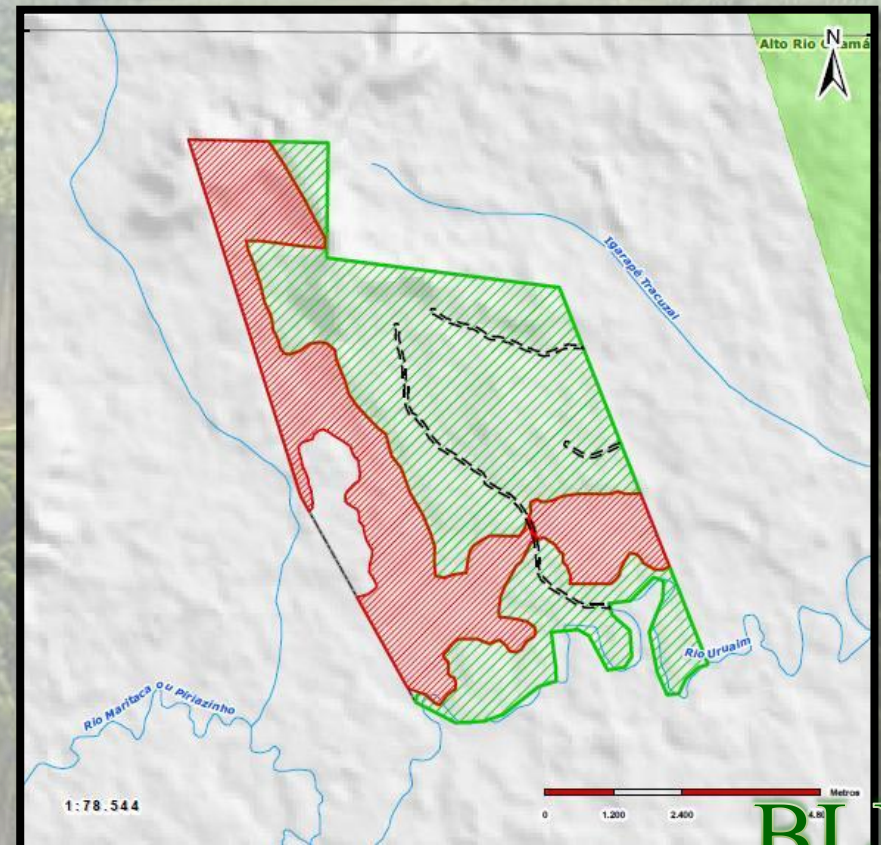




FARM 5

Total Area: 4,533.78 hectares

Open Area: 1,588.62 hectares

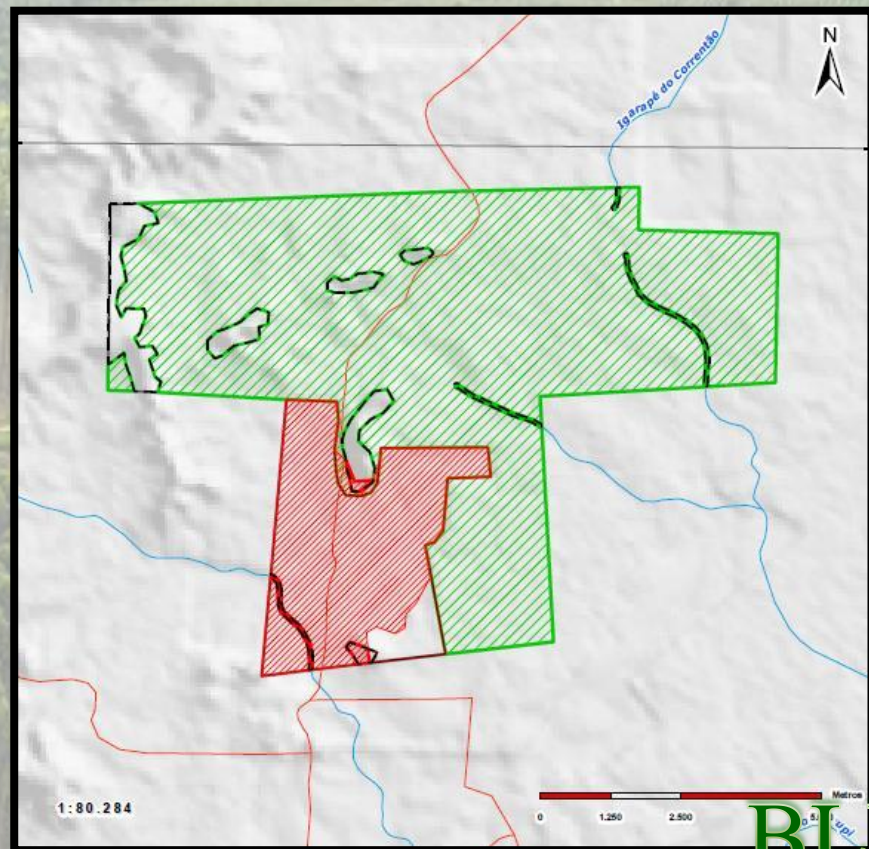




FARM 6

Total Area: 6,275.84 hectares

Open Area: 1,183.50 hectares

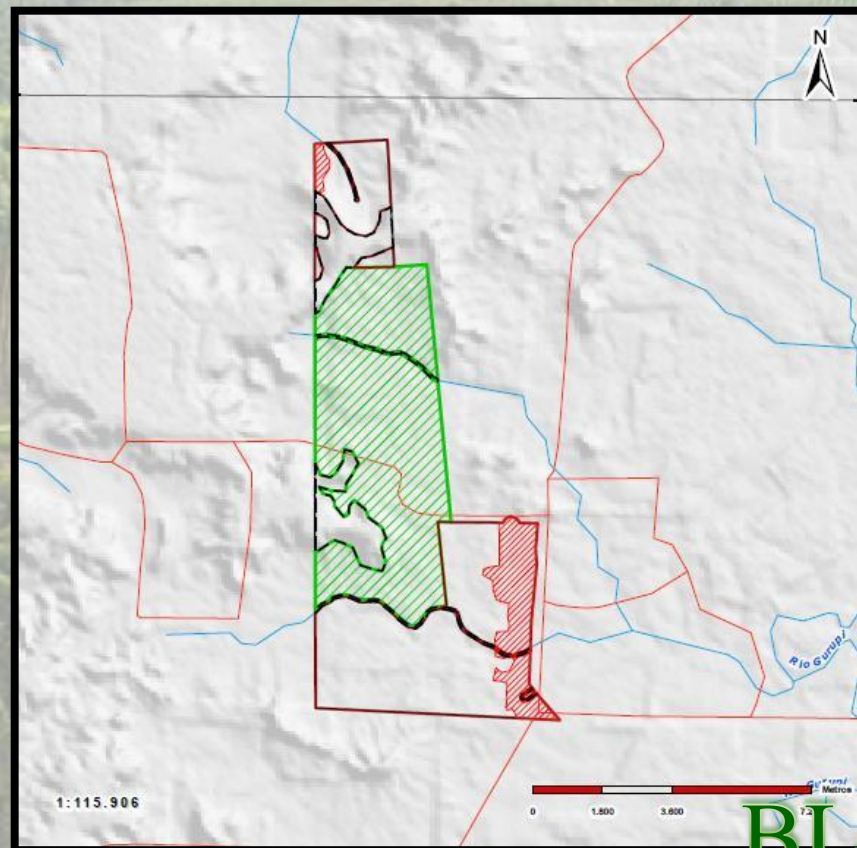




FARM 7

Total Area: 5,597.94 hectares

Open Area: 2,504.50 hectares

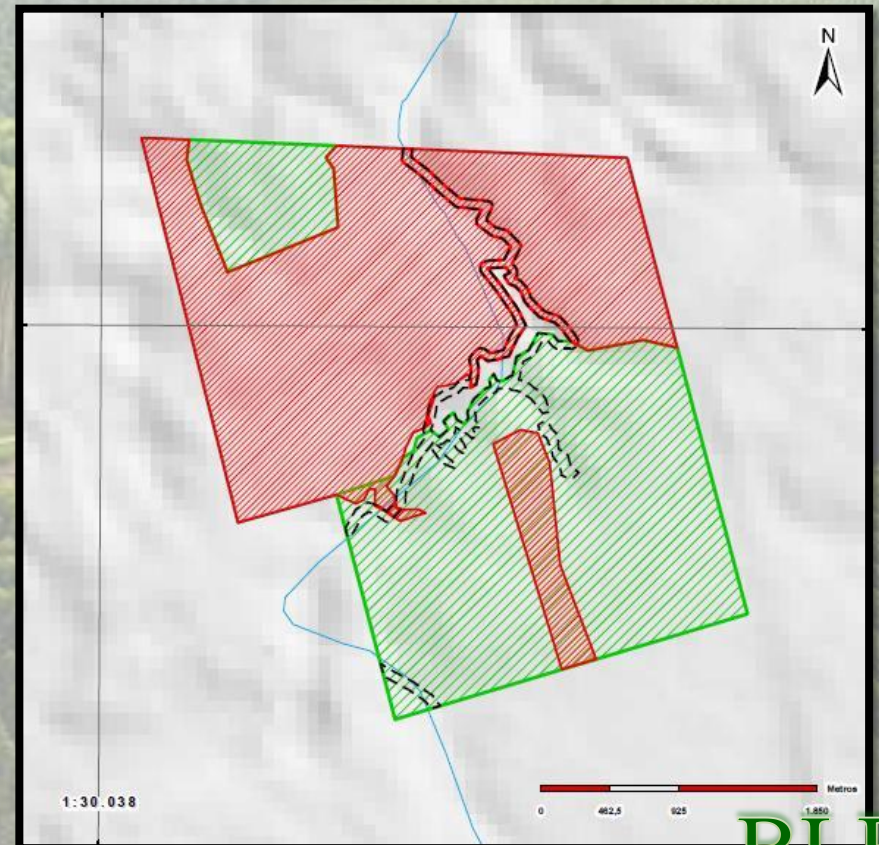




FARM 8

Total Area: 1,054.43 hectares

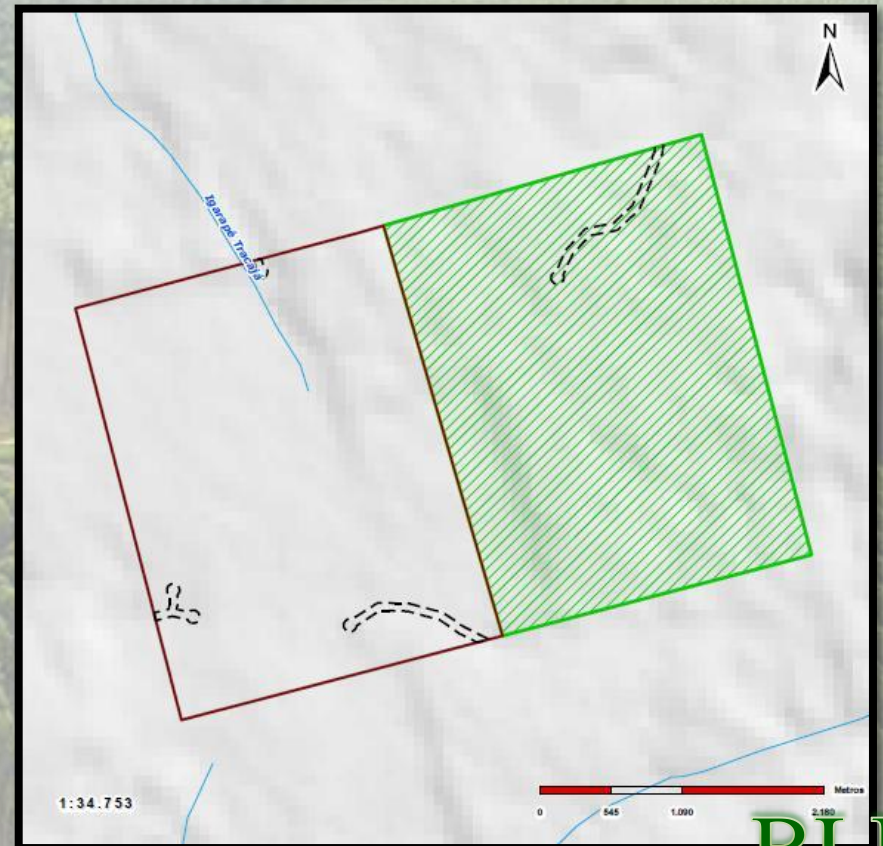
Open Area: 551.81 hectares



FARM 9

Total Area: 1,655.70 hectares

Open Area: 823.19 hectares

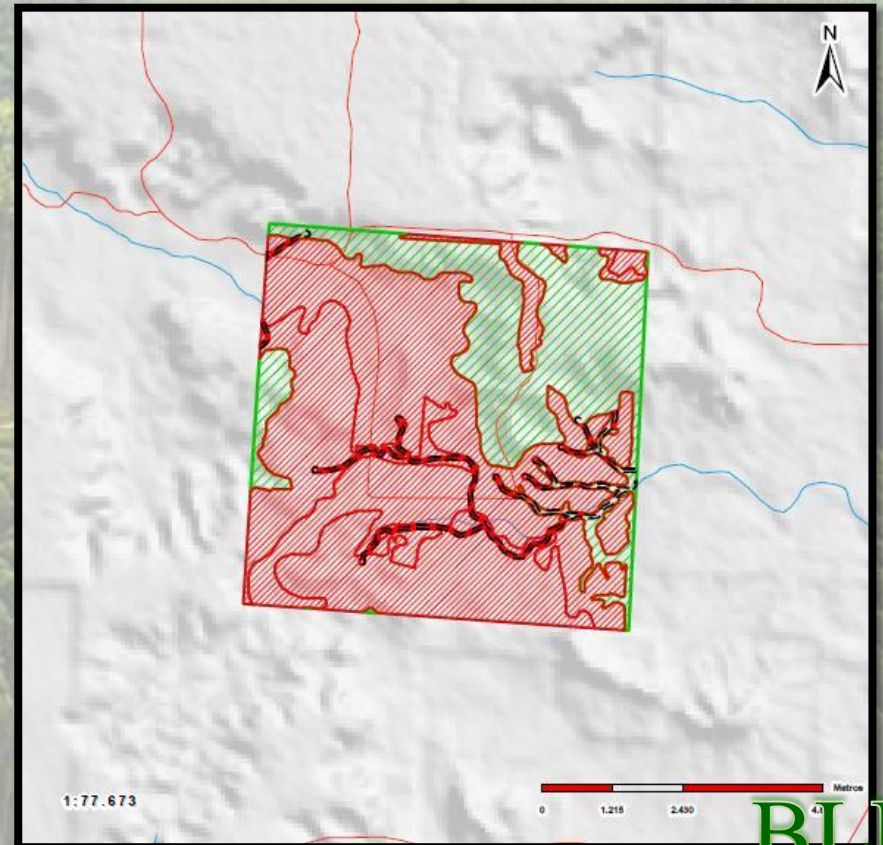




FARM 10

Total Area: 4,367.32 hectares

Open Area: 3,098.63 hectares

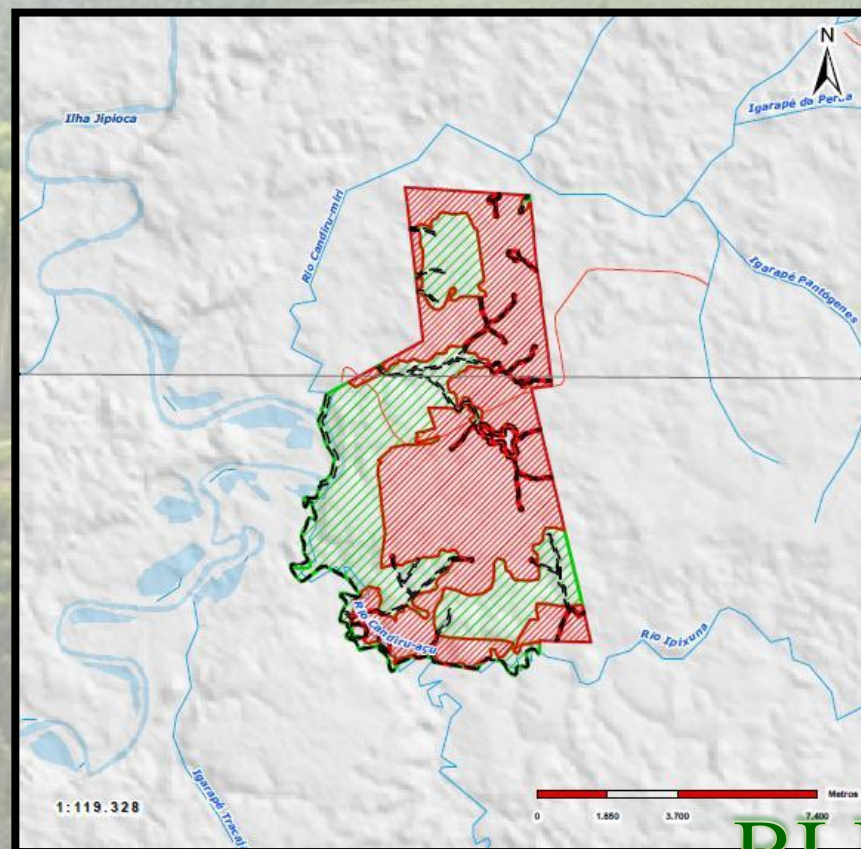




FARM 11

Total Area: 6,274.56 hectares

Open Area: 3,665.63 hectares

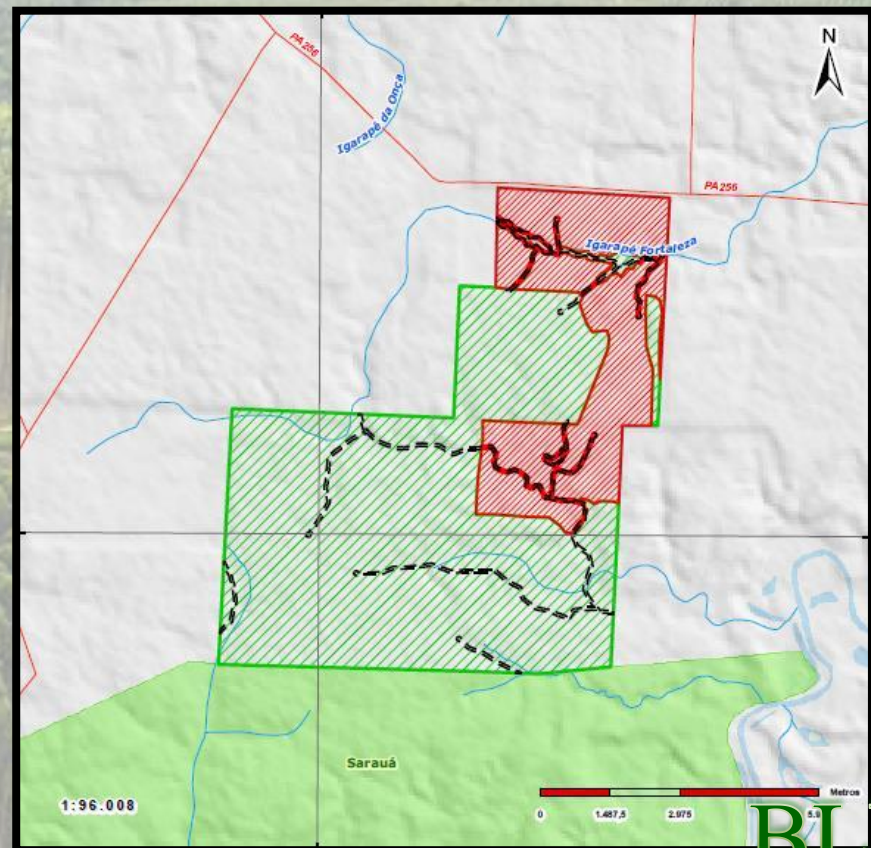




FARM 12

Total Area: 6,524.11 hectares

Open Area: 1,662,82 hectares





FARM 13

Total Area: 2,904.00 hectares

Open Area: 515.20 hectares

Open Area in Re-Generation: 800 hectares

