

# FARM 4

## 5,556 ha Farm in Coaceral, Bahia

### 2,100 ha planted

- **Location:** Area located in the municipality of Formosa do Rio Preto in the western region of Bahia Coaceral.
- **Access:** Dirt Road with excellent access. Asphalt at 35 km, Bunge at 35 Km, Cargill at 45 km, Formosa do Rio Preto at 120 km.
- **Open Area:** 1500 ha of area with more than 4 years planted (600 ha of area with more than 1 at 2 years planted).
- **Area to be planted:** 2340 ha in savannah
- **Legal Reserve:** 20%
- **Vegetation:** Savannah Middle
- **Topography:** 100% flat
- **Soil:** red clay of 25% to 35%
- **Rainfall:** 1400 mm to 1600 mm / year  
Agriculture: soy, corn, cotton
- **History crop:** Season: 2008/2009: 2072 ha of Soy and 28 ha of Corn. Season 2009/2010: 2096 ha of Soy and 4 ha of Corn.
- **History od Productivity:** Season 2008/2009: 45 bags of Soy/ha  
Season 2009/2010: 55 bags of Soy/ ha, 130 bags of Corn/ha.

**PRICE:** R\$ 19.000.000,00 Reais



Soy Farming



Corn Farming





# FARM 5

## 7,000 hectares Farm in Piauí

### 3,100 ha planted

- **Location:** Area located in the municipality of Barreiras do Piauí, State of Piauí, in the western region of Bahia Coaceral.
- **Access:** 35 Km of Dirt Road with excellent access. Asphalt at 35 km.
- **Open Area:** 3,100 hectares.
- 1800 ha planted more than 12 years
- 1300 ha planted more than 10 years
- **Area to be planted:** 1700 ha in savannah
- **Legal Reserve:** 30%
- **Vegetation:** Savannah Middle
- **Topography:** 100% flat
- **Altitude:** 780 meters
- **Soil:** Clay of 25%
- **Rainfall:** 1300 mm to 1600 mm / year
- **Agriculture:** soy / corn / cotton
- **History crop:** Season: 2007/2008: 1350 ha of Soy, 1300 ha of Cotton and 450 ha of Corn.
- Season 2008/2009: 1400 ha of Soy, 1300 ha of Cotton and 400 ha of Corn.
- Season 2009/2010: 3100 ha of Soy
- **History of Productivity:** Season 2007/2008: 55 bags of Soy/ha; 130 bags of Corn/ha; 260 @/ha of Cotton.
- Season 2008/2009: 55 bags of Soy/ha; 139 bags of Corn/ha; 250 @/ha of Cotton.
- Season 2009/2010: 55 bags of Soy/ha.

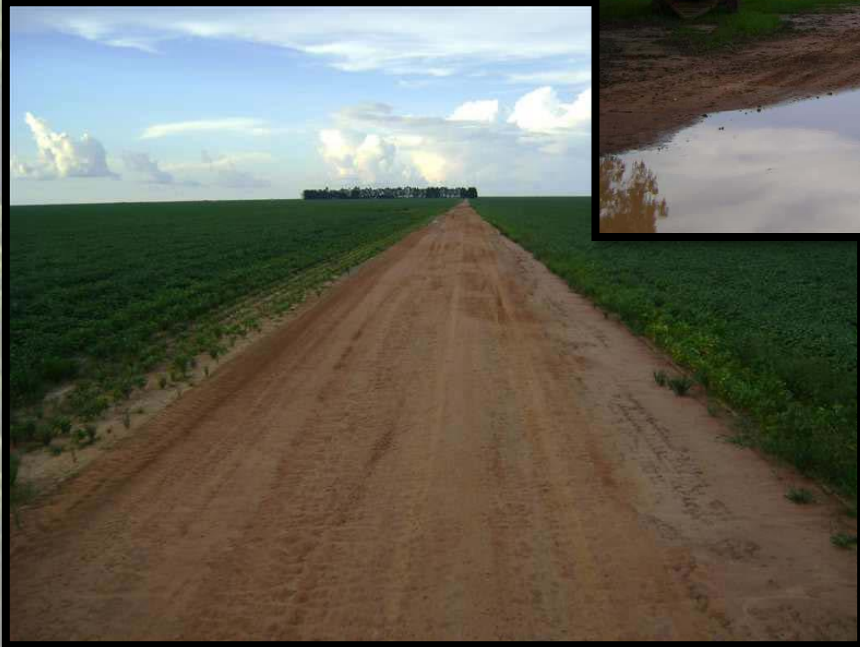
**PRICE:** R\$ 60.000.000,00 Reais



Cotton



Soy



BLB



# FARM 6

## 9,041 hectares Farm in Bahia

### 3,600 ha planted

- **Location:** Area located in the municipality of Formosa do Rio Preto in the western region of Bahia.
- **Access:** Dirt Road with excellent access. Luiz Eduardo Magalhães at 110 km, Bunge at 12 Km, Cargill at 12 km, Barreiras at 155 km.
- **Planted Area:** 3,600 ha
- **Open Area:** 3.500 ha
- **Legal Reserve:** 20%
- **Vegetation:** Savannah Middle
- **Topography:** 100% flat
- **Soil:** Clay of 28%
- **Hydrography:** Rio do Ouro ( Gold River)
- **Rainfall:** 1400 mm to 1700 mm / year
- **Agriculture:** soy / corn / cotton

**PRICE:** R\$ 61.000.000,00 Reais



BLB